

WinchBot v2.0

www.homofaciens.de/technics-machines-winchbot-2-0_en.htm

1-4 GND

5-8 +12V

9-12 Phase A+

13-16 Phase A-

17-20 Phase B+

21-24 Phase B-

25 Current set

26 Do not use

27 Direction

28 Step

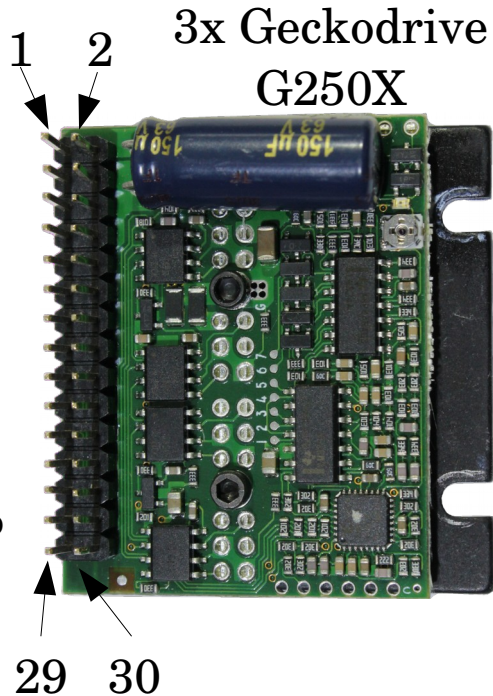
29 Disable

30 Signal GND

Connect 1.5k resistor

between 25 and 30 (GND)

to set 1.5A of phase current.



2x L293D

Enable 1 to +3.3V

Input 1

Motor Phase A+

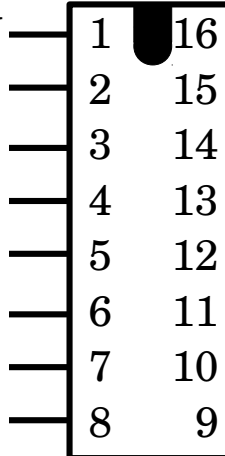
GND

GND

Motor Phase A-

Input 2

+12V



Logic to +3.3V

Input 4

Motor Phase B+

GND

GND

Motor Phase B-

Input 3

Enable 2 to +3.3V



SIMATIC
IOT2020

+5V: +5V

GND : GND

Pin 2: Motor 1 Step

Pin 3: Servo 3 (rotate) control

Pin 4: Motor 1 Direction

Pin 5: Servo 4 (tilt) control

Pin 6: Servo 5 (gripper) control

Pin 7: Motor 2 Step

Pin 8: Motor 2 Direction

Pin9: Motor 3 Step

Pin10: Motor 3 Direction

Pin11: L293D P1 in 1

Pin12: L293D P1 in 2

Pin13: L293D P1 in 3

PinA0: L293D P1 in 4

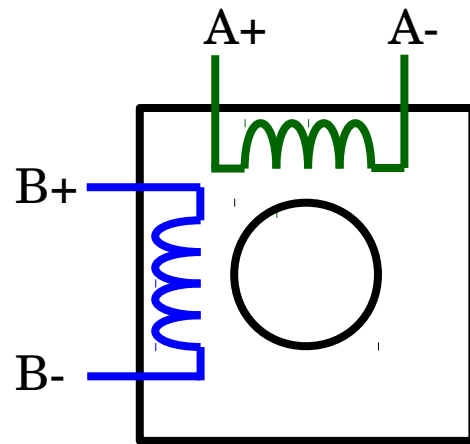
PinA1: L293D P2 in 1

PinA2: L293D P2 in 2

PinA3: L293D P2 in 3

PinA4: L293D P2 in 4

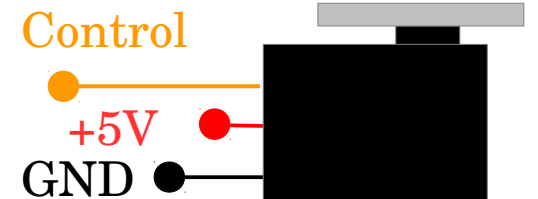
PinA5: Enable pins of GeckoDrives



Stepper motor

3x 1.68A @ 2.8V

2x 400mA @ 12V



3x Standard servo